

المعارف والاتجاهات والتطبيقات (K.A.P) المتعلقة
بالمقياس والتقويم لدى معلمي التربية الرياضية
لمدارس إقليم الشمال في الأردن


/

قرار لجنة المناقشة

نوقشت هذه الأطروحة (المعارف والاتجاهات والتطبيقات (K.A.P) المتعلقة بالقياس والتقويم لدى معلمي التربية الرياضية لمدارس إقليم الشمال في الأردن) ، وأجيزت بتاريخ ٢٧/١٢/٢٠٠٦ .

التوقيع


أعضاء لجنة المناقشة


.....

الدكتور حسين حسن أبو الرز، مشرفاً
أستاذ مشارك تدريب رياضي - التربية الرياضية (جامعة اليرموك)


.....

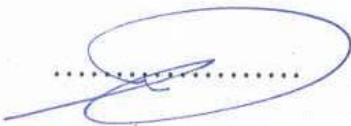
الدكتور عربي حمودة المغربي، عضواً
أستاذ تدريب رياضي - التربية الرياضية


.....

الدكتورة سهى أديب عيسى، عضواً
أستاذ الإدارة في التربية الرياضية - التربية الرياضية


.....

الدكتورة منار عبد الرحمن شاهين، عضواً
أستاذ مساعد تدريب رياضي - التربية الرياضية


.....

الدكتور فايز سعيد أبو عريضة، عضواً
أستاذ تدريب رياضي - التربية الرياضية (جامعة اليرموك)

تعتمد كلية الدراسات العليا
هذه النسخة من الرسالة
التوقيع: التاريخ:
C..

:

....

...

...

...

.....
.....
.....
.....
.....
.....
.....

.....
.....
.....
.....
.....
.....
.....

.....
.....
.....
.....
.....
.....
.....
.....
.....

.....
.....
.....
.....
.....
.....
.....
.....
.....
.....

.....
.....

.....
.....

.....
.....

..... ()
..... ()
..... ()
..... ()
..... ()
..... ()
..... ()
..... ()

.....

(K.A.P)

(KAP)

%

:

(SPSS)

%

(K.A.P)

:

() ()

.

.

K.A.P

Attitudes

Knowledge

Practices

Stanton &) (Haines et.al,)

K.A.P

(Johnson,

(Wroble R ,et.al ,) (lavre P,et.al .)

(Badran,)

)

()

(

(Badran,)

(Badran,)

() .

()

()

()

)

(

Evaluation

()

" ()

"

()

"

()

() "

()

()

)

.(

Measurement

" Don,et,al.)

" Stevens ()

() "

"

() ."

" "

()

() .

() . "

" "

()

()

"

"

// -

()

Attitudes

Knowledge

(K.A.P)

Practices

)

(

()

■

■

■

■

■

(K.A.P)

Attitudes

Knowledge

Practices

(KAP)

)

/

:

:

(

:

:

. ()

Historical Background Of Measurement And Evaluation

)

(

) ()

(

()

() ()

Polyclets

()

()

—

—

()

()

()

:

. :

. :

. :

. :

. :

)

(:) (:

Edward Hitchcock

()

C.Word Crampton

E.C.Schnider

()

" "

David Brace

(R.A.A)

)

(

Barrow and Magee

Vunadt

. () . Cattl Galton

Evaluation

" ()

() "

"

"

"

Frank Verdcci ,

" () "

"

)

"

" (

"

" ()

" ()

)

"

(

Measurement

" ()

" () "

"

"

Frank,

"

"

Safrit,

)

"

"

" (

" ()

" () "

) "

"

" (

" ()

"

Test

"

"

) ()

(

)

"

" (

()

"

" Cronbach () "

" () "

"

" ()

" () . "

) " ()

" (

"

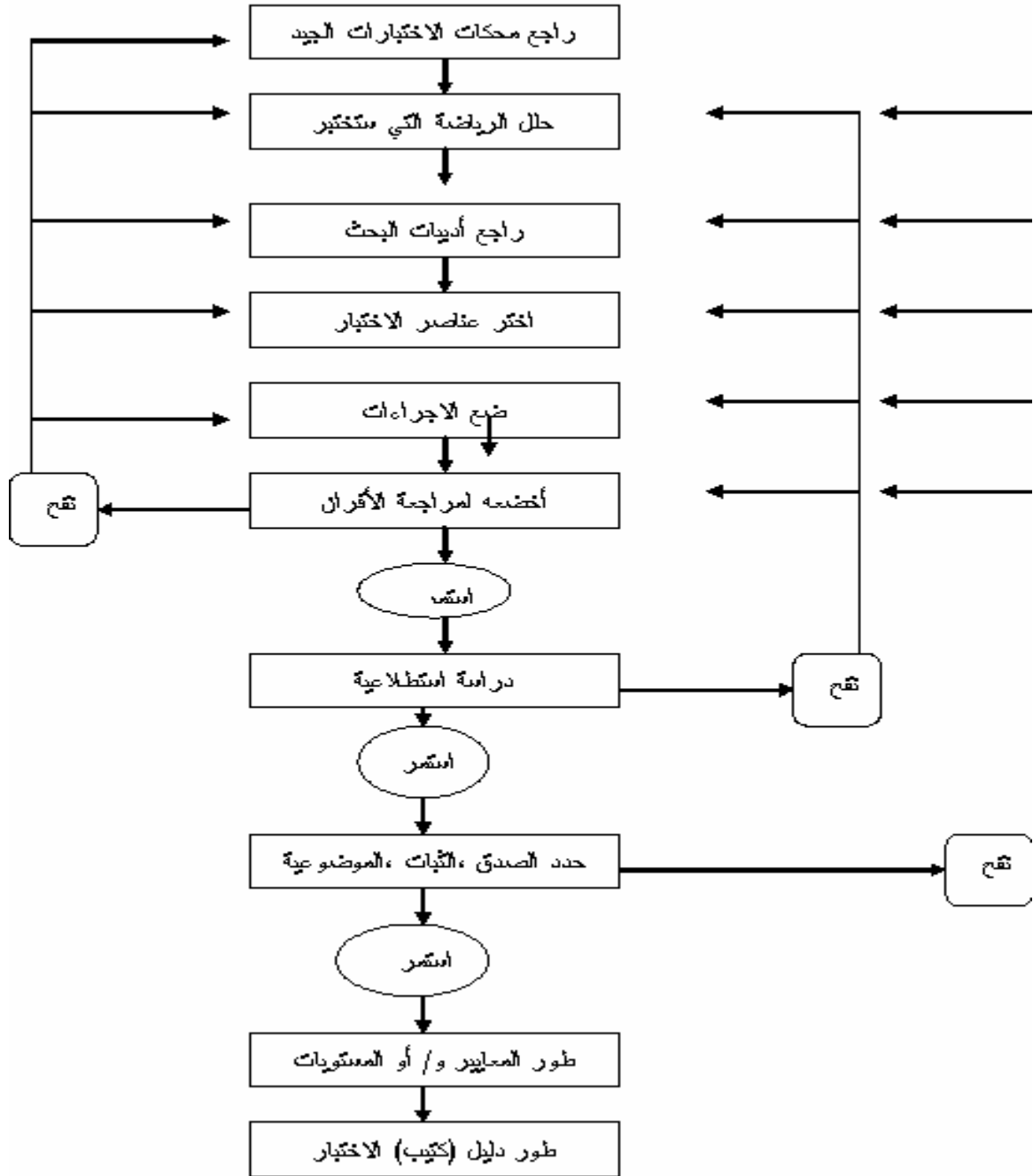
()

(Stand & Wilson ,)

:

شكل (1)

خريطة خطوات متسلسلة لبناء بطاريات اختبار للمهارات النفس حركية (Stand & Wilson,1992) نقلًا عن مورو : 444



شكل يوضح خريطة خطوات لبناء اختبارات المهارات الحركية

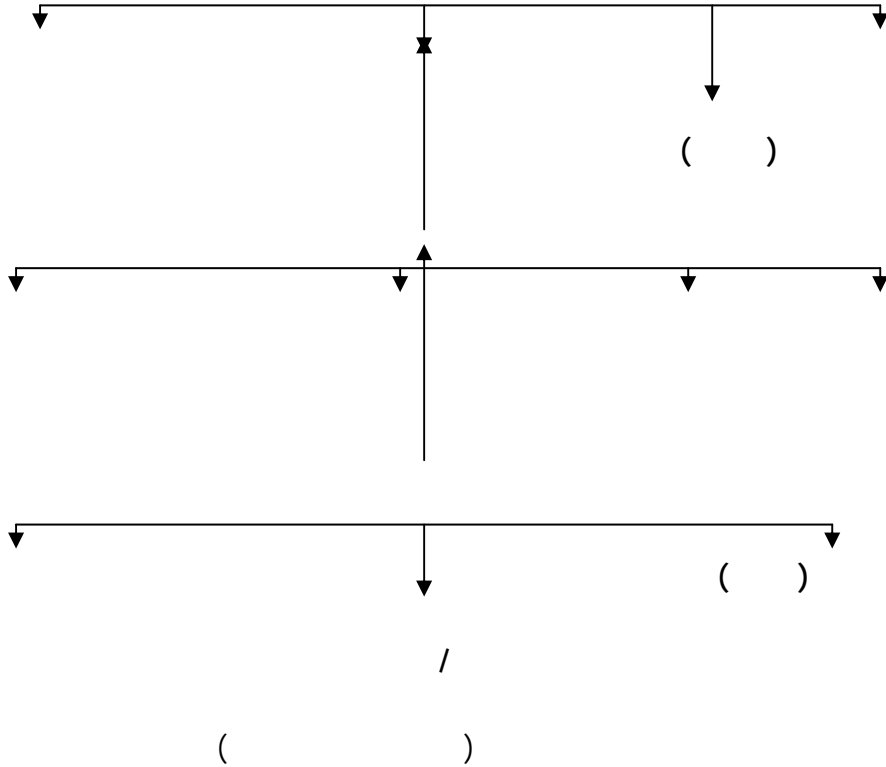
() .

) ()

:

(

()



()

()

()

()

()

) () () ()

(

Cognitive Domain :

.()

Affective Domain :

Psychomotor Domain :

()

:

()

()

()

Krathohl

)

Verducci,

(

:

()

:

()

:

()

:

()

	knowledge			Cognitive Domain bloom
	comprehension			
	application			
	Analysis			
	synthesis			
	evaluation			
	Receiving			
	responding			Affective Domain Krathwhole
	Valuing			
	organization			
	Complex			
	perception			Psychomotor Domain
	set			
/	guided			Simpson
()	mechanism			
	Complex over response			
	adaptation			
	origination			

:

.

:

:

Primative

-

() () () ()
.()

Formative

-

)() .

Objective

–

) () ()

(

Diagnostic

–

()

()

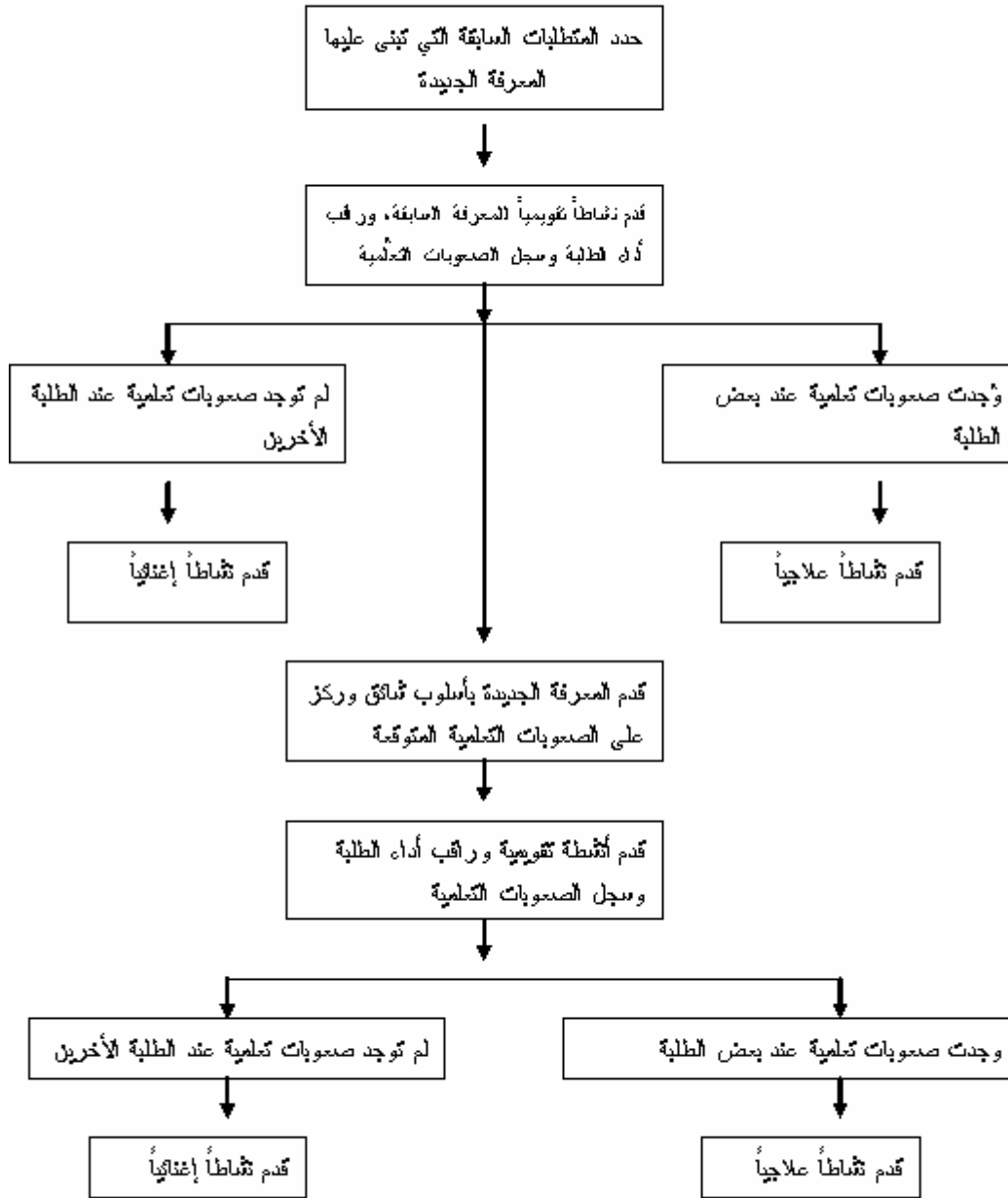
)

(

:

شكل (3)

خريطة خطوات أسلوب التقييم الشخصي لخطّة تعليمية (الرواشدة وزملائه، 2001: 34)



شكل يوضح خريطة خطوات لعملية التقييم والتقييم الشخصي

:Norms

... ()

()

() Norms Table

() () () ()

() ()

Scales Measurement And Evaluation

()

)

(

-:

Nominal Scale

)
() () () () ()
(Don,) () ()
() ()
() ()
() () <

Ordinal Scale

) () ()
) () () () () ()
Don) () () () ()
(

Interval Scale

() () .

Don) () () () ()

.(

()

+

)

()

(-)

. (

Ratio Scale

(Absolute Zero)

...

) () () .

() () () ()

()
) () ()
() () () ()
. () ()

%

. ()
() ()
()

. () ()

Norm- Referenced

() () .
() () () ()

Standardization

()

-: Validity

Wright Stone,et.al.

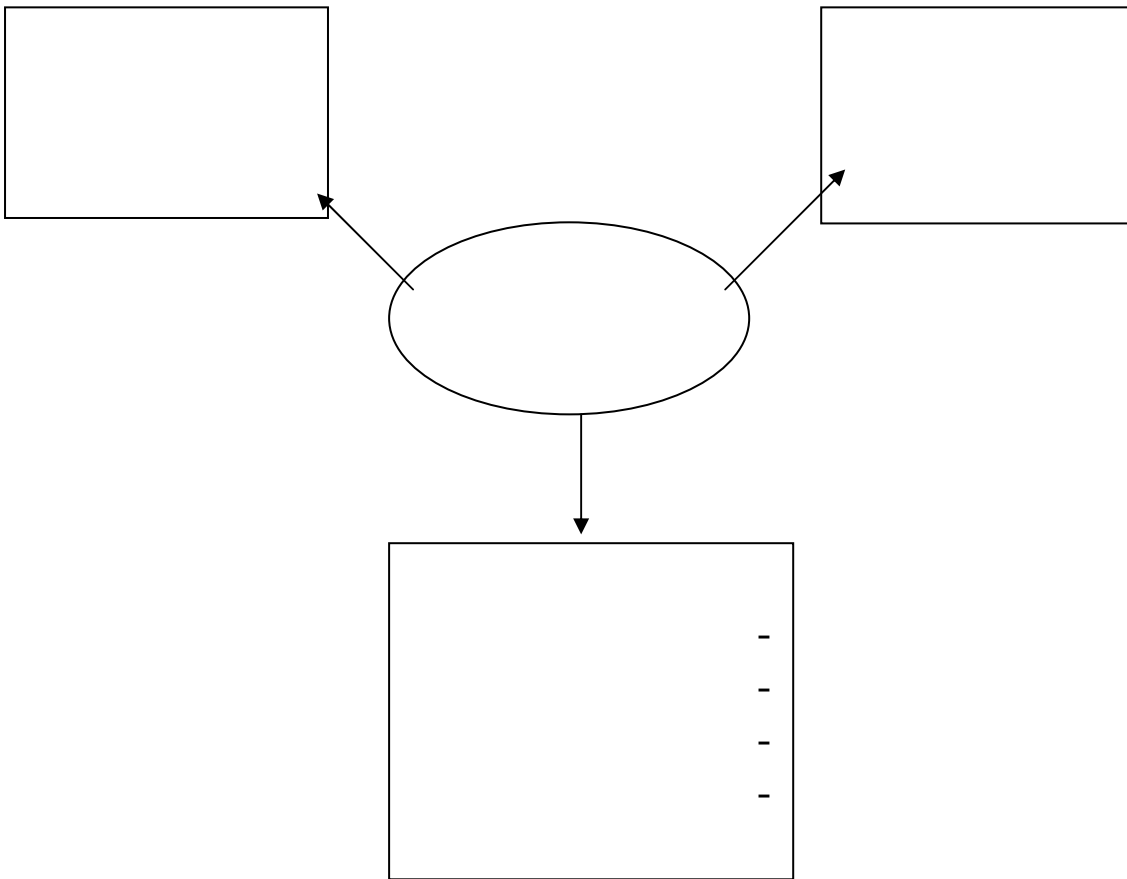
" " Kurkon
) () ()
(

Specific

Relative

()

) () ()
(A.P.A) . (:
()



()

Content Validity

validity by

logical validity

definition

.() () () .

Criterion-Related Validity

:

) () () .

. () (

Construct Validity

()

Construct Validity

)

-

-

(

)

(

()

Total Score

()

).)

.(

)(

)(

)(

Reliability :

()
()

-: **Relative Reliability** -

:

Internal Consistency Reliability

Stability

Reliability

Rater Reliability

-: **Absolute Reliability** -

Split- Test-Retest Method :
Equivalent- Forms Method Half Method

Coefficient Alpha Kuder- Richardson

:Test Re-test *

.()

: Split-half Method *

()

. () Spearman- Brown

: Equivalent Forms Method *

.()

: kuder-Richardson - *

)

.(

: Cronbach-Alpha - *

: Objectivity

()

()

()

()

:

()
) () . ()
) () () () ()
) () () () ()
(

Placement •

).

. () (

Diagnosis •

()

.() ()

Prediction

() .

()

Motivation () •

. () ()

Guidance •

. () ()

Selection •

) ()

.(

Program Evaluation

•

)

(

)

. () () (:

Grading

•

()

. ()

:Scientific Research

•

.()

:

: ()

-

-

-

-

-

-

-

-

-

-

: ()

()

-

-

()

-

-

-

-

-

-

-

-

-: ()

-

-

-

-

-

-:

()

-

-

-

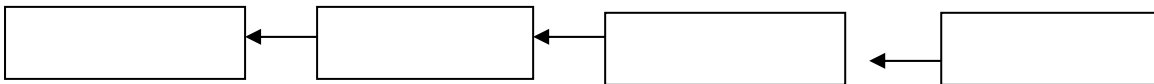
-

()

:

()

()



()

() .

() .

-

-

()

()

()

:

Rank Method

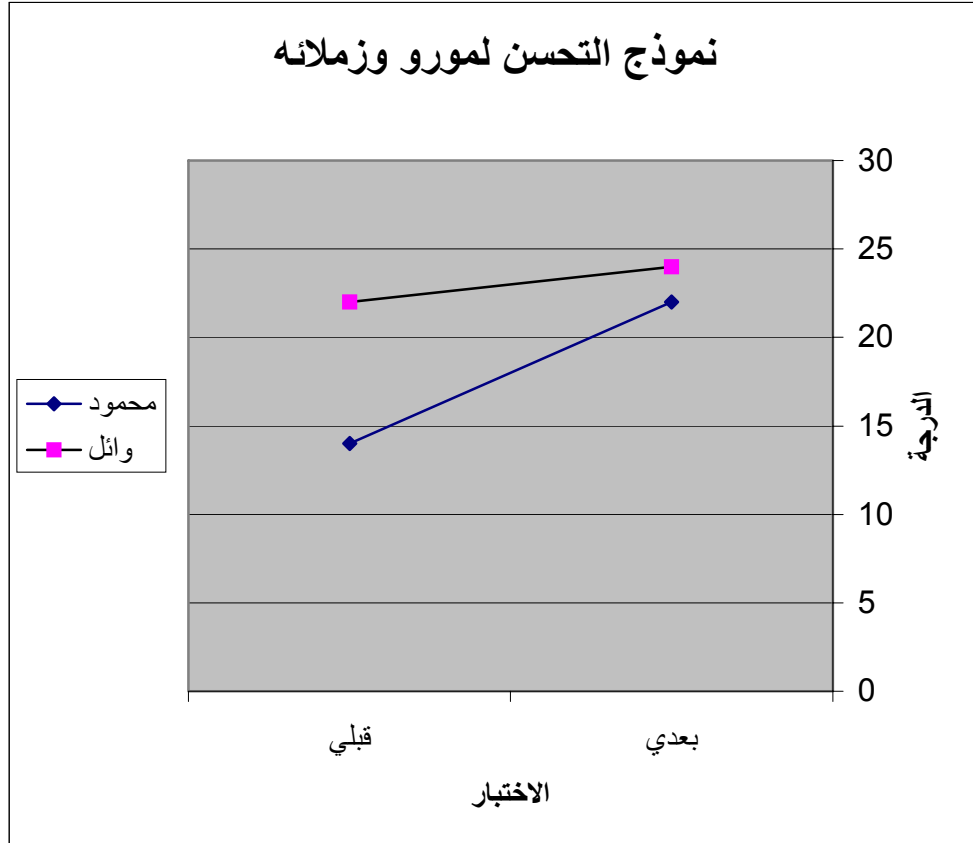
() %

() %

) ()

(

()



-

-

()

()

() .

.

() - -

()

.(() ())

()

() :

Determine Course Objectives And Their Relative Importance

() () ()

:

Measure The Degree Of Attainment Of Course Objectives

)

.(

Obtain A Composite Score

:

()

:

Convert Composite Score To A Grade

()

Attitudes Toward Measurement And Evaluation

"

) ()"

(

Anastasi

()

()

.()

()

Lindgren & Byrne

: ()

:

:

: ()

. ()

()

()

()

” ”

()

()

()

(K.A.P)

: ()

: :

Attitudes

lavre P,et.al ()

Knowledge

" ()

%

"

% ,

%

Diane Jette, ()

% ,

O Dea J & Abraham S, ()

%(-)

%

Wroble R ,et.al , ()

K.A.P

-

)

%, (

% %

%

()

()

()

()

()

:
()

Stanton & Johnson ()

K.A.P

HIV/AIDS

Haines et.al, ()

- - K.A.P

% ,

()

)

(

()

()

()

()

:

()

()

()

()

()

()

:

()

()

%

Shona ,()

- - K.A.P

()

)

(

()

()

()

()

()

:

() Stanton & Johnson , () :
Shona ,

Diane Jette, () Shona , :

. () O Dea J & Abraham S, () ()

() Diane Jette, ()

()

Wroble R ,et.al ()

Wroble R ,et.al ()

()

()

Shona ()

Stanton & Johnson

()

()

()

()

Haines et.al () ()

-:

.

()

()

()

()

()

/

.()

()

()

()

(% ,)

%

% , : (% ,)
(%) (%)
% ,
(%) (%)
% ,
% %
(% ,)
(+) % %

()

:

'						
'						
'						
'						
'						
'						
'						
'						
'						
'						
'						
'						
'						
'						
'						

()

%						
,						
,						
,						
,						
,						
,						
,						
,						
,						
,						

:

:

() :

) :

(

. // /

(K.A.P)

:

-:

:

()

:

- , ■
- , - , ■
- , - , ■
- , - , ■

.....
.....
.....

.....) ()
() ()

--- : ()

- : ()

:

.() () ■

.() () ■

.() () ■

.() () ■

.() () ■

:

() , ■

. () , - , ■

. , - , ■

. () , - , ■

. () , ■

: .

) ()

) (

(

- - - - - : ()

- - - - : () - - - -

:

. () () ■

. () () ■

. () () ■

. () () ■

:

, - ■

, - , ■

, - , ■

- , ■

:

■

■

■

.()

■

■

.()

■

()

■

()

-
-
-
-

()

:

()

:

.

.

-

- (K.A.P)

%

()

,

-

*

-

,

,

,

,

.

*

=

*

+

()

'	'	'	
'	'	'	
'	'	'	

()

// - //

:

:

(SPSS)

-

-

-

()

-

-

(KAP)

.

"

"

()

()

	.	.		
	.	.		
	.	.		
	.	.		
	.	.		
	.	.	Formative Evaluation ()	
	.	.		
	.	.		
	.	.		
	.	.		
	.	.		
	.	.		
	.	.		
	.	.		
	.	.		
	.	.		
	.	.		
	.	.		
	.	.		
	.	.		

"

"

"

"

()

()

	/	/		
	/	/	.	
	/	/		
	/	/	.	
	/	/		
	/	/	.	
	/	/		
	/	/	.	
	/	/		

	/	/		
	/	/		
	/	/		
	/	/		
	/	/		
	/	/		
	/	/		
	/	/		
	/	/		
	/	/		
	/	/		
	/	/		
	/	/		
	/	/		
	/	/		
	/	/		

()

()

:

	.	/	.	
	.	/	.	
	.	/	.	
	.	/	.	
	.	/	.	
	.	/	.	
	.	/	.	
	.	/	.	
	.	/	.	
	.	/	.	
	.	/	.	
	.	/	.	
	.	/	.	
	.	/	.	
	.	/	.	
	.	/	.	
	.	/	.	
	.	/	.	

	.	'	.	
	.	'	.	
	.	'	.	
	.	')	
	.	'	(..	
	.	'	.	
	.	'	.	
	.	'	.	
	.	'	.	
	'	'		

()

-	-	-		
-	-	. (*)		
-	. (*)	. (*)		

, $\geq \alpha$ *

()

(, $\geq \alpha$)

' " _____

) "

. (

()

()

()

()

()

*		-	.	.	/	/			
.		/	.	.	/	/			
.		-	.	/	/	/			

$\geq \alpha$

*

()

()

$\geq \alpha$

()

"



"

(

)

()

()

*	,	.	.	,		,		
*	,	*	,	,		,		
*	,	*	,	,		,		

, $\geq \alpha$ *

(, $\geq \alpha$)

()

()

.

.

.

()

:

'	'	'	'	'	'		
'	'	'	'	'	'		
'	'	'	'	'	'		
'	'	'	'	'	'		
'	'	'	'	'	'		

()

)

(

'

'

'

'

'

'

'

'

()

()

:

			' *	
		' *	' *	
	' *	' *	' *	

, $\geq \alpha$ *

()

, $\geq \alpha$

()

()

:

			' *	
		' *	' *	
	' *	' *	' *	

' $\geq \alpha$ *

()

' $\geq \alpha$

' "

()

()

:

			,	
		,	*	
	,	*	,	*

, $\geq \alpha$ *

()

, $\geq \alpha$

"

"

"

)

"

.(

()

()

.	,	.	.	,		,		
.	.	.	.	,		,		
.	.	.	*	,		,		

, $\geq \alpha$ *

()

()

(, $\geq \alpha$)

()

()

:

'	'			
'	'		-	
'	'			
'	'		Total	
'	'			
'	'		-	
'	'			
'	'		Total	
'	'			
'	'		-	
'	'			
'	'		Total	

()

"

"

()

()

()

:

.	,	.	.	,		,		
*	,	*	,	,		,		
*	,	*	,	,		,		

, $\geq \alpha$

*

(, $\geq \alpha$)

()

()

()

:

'	'	'	'	'	'		
'	'	'	'	'	'		
'	'	'	'	'	'		
'	'	'	'	'	'		
'	'	'	'	'	'		

()

()

'

'

'

'

'

'

()

()

:

			'	
		' *	'	
	'	'	'	

' $\geq \alpha$ *

' $\geq \alpha$ **

()

' $\geq \alpha$

.

()

()

:

			,	
		,	*	
	,	*	,	*

, $\geq \alpha$ *

, $\geq \alpha$

"

"

()

()

()

*	,	.	,	,		,		
*	,	.	.	,		,		
*	,	*	,	,		,		

(, $\geq \alpha$)

, $\geq \alpha$ *

()

()

- - -

()

:

'	'	'	'	'	'		
'	'	'	'	'	'		
'	'	'	'	'	'		
'	'	'	'	'	'		
'	'	'	'	'	'		
'	'	'	'	'	'		Total

()

()

'

'

'

'

()

()

:

			,	
		, *	- ,	
	- ,	- , *	- , *	

, $\geq \alpha$ *

()

, $\geq \alpha$

()

()

:

			,	
		- , *	- , *	
	- ,	- , *	- , *	

, $\geq \alpha$ *

()

, $\geq \alpha$

()

()

:

			, *	
		- , *	- , *	
	,	- , *	- , *	

, $\geq \alpha$ *

()

, $\geq \alpha$

:

"

"

()

"

"

"

"

Haines, ,et.al

Dea J & Abraham S.

. Wroble R ,et.al.

Lavre P,et.al .

"

"

()

"

"

Haines et.al,

Diane Jette,

()

"

"

()

"

"

"

O Dea J & Abraham S, .

Haines et.al,

Diane Jette,

Stanton & Johnson ,

:

"

"

()

Diane Jette,

Haines et.al,

Stanton & Johnson ,

. O Dea J & Abraham S, .

Badran,

Diane Jette,

O Dea J & Abraham S, .

Wroble R ,et.al

lavre P,et.al

Stanton & Johnson , .

Haines et.al,

. Wroble R ,et.al ,

"

()

"

()

O Dea J & Abraham S, .

Wroble R ,et.al ,

O Dea J & Abraham S, .

Wroble R ,et.al ,

.

Wroble R ,et.al ,

. O Dea J & Abraham S, .

"

)

"

(

(

)

Stanton & Johnson ,

()

Shona ,

)

(

Stanton & Johnson ,

"

)

"

.(

(

)

)

(

)

(

.

"

)

"

.(

(

)

()

)

(

•
" _____
"
.()
()

)

(

()

:

■

■

■

■

)

■

(

)

■

(

:

■

)

.(

)

(

■

■

■

■

■

■

-

-

:

■

()

) ()

. ... (

■

■

.()

:

.()

: ()

.()

:

: .()

.

.()

:

.()

-

.()

.

.()

.()

:

.()

: ()

.()

.()

:

.()

:

.()

.()

:

.()

()

. -

.()

. :

.()

. :

.()

. - :

.()

:

.()

. - ()

.()

.()

.()

. -

.()

SPSS

.()

:

.()

. :

.()

. :

.()

.()

:

.()

:

.()

()

.()

. :

:()

. -

.()

:

.()

.()

.()

.()

()

:

.()

.()

:

.()

:

.()

-

.()

.()

.()

.()

.()

.()

.()

.()

.()

.()

Done & Others (). **Measurement And Evaluation For Physical**

Educators , Second Edition , Human Kinetics Publishers ,Inc .U.S.A .

Haines And Others (), Alberta Mens Knowledge, Attitude, Practices

And Information Needs About Prostate Cancer And PSA Testing, **Pub Med -**

Indexed For MEDLINE, Vol. , No. .

Verducci Frank M.() .**Measurement Concepts In Physical Education**,

The C.V. Mosby Company.St.Louis, ,pp -

Gregory J& Others() : Measurement Issues In The Assessment Of

Physical Activity In Children , **RQES** , Vol. ,Supplement To No . ,.

Badran Ibrahim G() : Knowledge, Attitude And Practice The Three

Pillars Of Excellence And Wisdom : **A Place In The Medical, Profession**,

Volume , Issue ,.

Lavre P& Others(), General Practioners And Doping In Sport : Attitudes
And Experience, **Br J Sports Med**.

Safrit &Wood() . **Measurement In Physical Education And Exercise**

Sciencem, dtion, Mosby.

Shona C() : **Food And Nutrition-Related Beliefs, Attitudes, Practices And Perceived Needs Of Food Stamp Recipients In Virginia**, Library And Archives, etds - ./.

Stanton & Johnson() . Effect Of Training Program On Pysicians Attitude Towards Knowledge And Practice Related To Assessment And Screening Of Clients With HIV/AIDS, **Pub Med - Indexed For MEDLINE**, Volum Issue -.

Diane U Jette & Others () : Evidence-Based Practice: Beliefs, Attitudes, Knowledge, And Behaviors Of Physical Therapists ,**Physical Therapy** Volume · Number · September.

Wroble R And Others() :Anabolic Steroids And Pre-Adolescent Athletes: Prevalence, Knowledge, And Attitudes , **The Sport Journal**..

Odea J & Abraham () , Knowledge, Beliefs, Attitudes, And Behaviors Related To Weight Control, Eating Disorders, And Body Image In Australian Trainee Home Economics And Physical Education Teachers. **Pub Med - Indexed For MEDLINE**, Nov-Dec; () : - .

			% ,				Diane Jette,
()			()				

<p style="text-align: center;">%(-)</p> <p style="text-align: center;">%</p>					<p style="text-align: center;">O Dea J & Abraham S .</p>
<p style="text-align: center;">% ,</p> <p style="text-align: center;">%</p> <p style="text-align: center;">%</p> <p style="text-align: center;">%</p>			<p style="text-align: center;">()</p> <p style="text-align: center;">-</p>	<p style="text-align: center;">K.A.P)</p> <p style="text-align: center;">(</p> <p style="text-align: center;">()</p>	<p style="text-align: center;">Wroble R ,et.al.</p>

					(K.A.P)	Stanton & Johnson
(-) (-) %		" "	() -		K.A.P) (Haines,et. al

%	()					
					K.A.P	Shona

)	
					(

)	(

	()	()			()	

	()					
()						

()

:

...

- - -

- -

- -

- x -

- -

- () -

- -

...

- -

- -

..

- - -

..

- - * - *

..

- - - -

...

- -

- -

..

- - - -

()

..

- - - -

...

- - - -

..

- - - -

..

- - - -

..
- - - -
...
() - () -
- - () -
..
- -
- -
...
- -
- -
...
- -
- -
...
- -
- -
..
- -
- -

..

--

-

-

-

..

-

-

-

-

..

-

-

-

-

..

-

-

-

-

..

-

-

— — —

” ”

...

— — — —

”

”

...

— — — —

— — — —

		-
		-
		-
		-

		-
		-
		-
		-
		-

:

		-
		-
		-
		-
	()	-
		-

	.	-
		-
	.	-
		-
		-
	(...)	-
		-
		-
	.	-

()

...

(K.A.P)

"

"

:

:

-

:

-

:

:

:

-

/

/

:

. :

: _____

/ :
/ : / :
/ :
/ :

.. *
- -
- -

.....:

.. *

/ :
/ : / :
/ : / :
: / :

X -
-
-
-

.....:

/ :

- -
- -

.....:

*

/ :
/ :
: / :

.. *
- - - -

.....:

*

/ : / :
/ :

.. *
- -
- -

.....:

/ :
/ : / :
/ :

.....:::

/
/ : /:

.....:::

/ :
: / :

.....:::

/ :
/ : / :
: / :

.....:::

/ : /:

.....:::

/ : / :
/ : / : / :
: / :

Formative ()

/: /:
/: /:
/: /: /:
/: /: /:

*

-

-

-

-

.....:::

*

/:
:
/: /

()

-

-

-

-

.....:::

*

/: /:
/: /:
: /:

-

-

-

-

.....:::

*

/:
:

-

-

-

-

-

.....:::

*

"

/: /: /:
/: /: /:
/:

...

"

-

-

-

-

.....:::

*

"

/: /:
/: /:
/:
/:

"

-

-

-

-

.....:::

:

/

*

-

-

-

-

	/ :
:	/ :
	/ :

.....:::
--------	--------	--------

*

-

-

-

-

/ :	/ :	/ :
/ :	/ :	/ :
	/ :	/ :

.....:::
--------	--------	--------

*

:

-

-

-

/ :	/ :
/ :	/ :
/ :	/ :

.....:::
--------	--------	--------

*

...

-

-

-

-

/ :	/ :
	/ :
/ :	/ :
	/ :

.....:::
--------	--------	--------

*

...

-

-

-

-

/ :	/ :
/ :	/ :
/ :	/ :
/ :	/ :

.....:::
--------	--------	--------

/ :
/ : / :
/ : / :
/ : / : / :

..

*

-

-

-

-

.....:::
--------	--------	--------

/ : / :
/ : / :
/ :
: / :

:

*

-

-

-

-

.....:::
--------	--------	--------

/ :
/ :
/ : / :

:

*

-

-

-

-

.....:::
--------	--------	--------

/ : / :
/ : / :
/ :

..

*

-

-

-

-

.....:::
--------	--------	--------

/ : / :
/ : / :
/ : / :

..

*

-

-

-

-

.....:::
--------	--------	--------

/ : / :
/ :
: / :

..

*

-

-

-

-

.....:::
--------	--------	--------

/ :
/ : / :
/ : / :

.

..

*

-

-

-

-

.....:::
--------	--------	--------

/ :
/ : / :
/ :

*

-

-

-

-

.....:

...

*

/ : / :
/ :

-

-

-

-

.....:

*

/ : / : / :
/ : / : / :
/ :

-

-

-

-

.....:

"

*

..

"

-

-

-

-

.....:

*

/ : / : / :
/ : / :
/ : / :

-

-

-

-

.....:

*

/ : / :
/ : / :
/ : / :
/ :

..

-

-

-

-

.....::

/ :
/ :
:

: *
-
-
-
-

.....::

/ :
/ :
:

: *
- - - -
+ - - (+) -

.....::

: / :
: /

: *
- - - -

.....::

/ :
/ :
: / :

: *
- . -
- . -

.....::

/ :

: *
" " - - - -

.....::

/ :

: Asthenia
- -
- -

.....::

/ :

: *
- - - -

.....::

/ :
/ :

:

.....:::
--------	--------	--------

:					
					-
					-
					-
					-
					-
					-
					-
					-
					-
					-
					-

: -) () . :					-
					-
					-
					-
					-
					-
					-
					-
					-
					-
					-
					-
					-
					-
				-	

-	:					-
						-
-	:					-
						-
:	-					-
						-
:	-					-
						-
:	-					-
						-

:

					-
					-
					-
					-
					-
					-

Franck					-
					-
					-
					-
					-
					-
					-
)	-
				(...	-
					-
					-
					-
					-
					-
				-	

Safrit & Wood	()				-
					-
					-
					-
					-
				Self-Motivation	-
				Inventory	-
					-

()

. / / ..

. / / ..

. / / ..

. / / ..

/ ..

. / / ..

. / / ..

. / / ..

. / / ..

. / / ..

. / / ..

()

/

"

(K.A.P)

"

/

/

/

:

. :

:

----- :

----- :

/

----- :

:

:

:

-

:

:

*

-

-

-

-

:

_*

-

-

-

-

:

*

-

-

-

-

*

:

..

-

-

-

-

:

*

-

-

-

-

:

Formative Evaluation ()

*

-

-

-

-

:

*

-

-

-

-

:

*

-

-

-

-

١٠٠

١٠١

١٠٢

١٠٣

١٠٤

١٠٥

١٠٦

١٠٧

١٠٨

١٠٩

١١٠

١١١

١١٢

١١٣

١١٤

١١٥

١١٦

١١٧

١١٨

١١٩

١٢٠

١٢١

١٢٢

١٢٣

١٢٤

١٢٥

١٢٦

١٢٧

١٢٨

١٢٩

١٣٠

١٣١

١٣٢

١٣٣

١٣٤

١٣٥

١٣٦

١٣٧

١٣٨

١٣٩

١٤٠

١٤١

١٤٢

١٤٣

١٤٤

١٤٥

١٤٦

١٤٧

١٤٨

١٤٩

١٥٠

١٥١

١٥٢

١٥٣

١٥٤

١٥٥

١٥٦

١٥٧

١٥٨

١٥٩

١٦٠

١٦١

١٦٢

١٦٣

١٦٤

١٦٥

١٦٦

١٦٧

١٦٨

١٦٩

١٧٠

١٧١

١٧٢

١٧٣

١٧٤

١٧٥

١٧٦

١٧٧

١٧٨

١٧٩

١٨٠

١٨١

١٨٢

١٨٣

١٨٤

١٨٥

١٨٦

١٨٧

١٨٨

١٨٩

١٩٠

١٩١

١٩٢

١٩٣

١٩٤

١٩٥

١٩٦

١٩٧

١٩٨

١٩٩

٢٠٠

	:	*
	-	-
	-	-
	:	*
	-	-
	-	-
	:	*
	-	-
	-	-
:		*
-	-	-
	:	*
-	-	-
	:	*
-	-	-
	:	*
-	-	-
	:	*
-	-	-

: *

- -

- -

: *

- -

- -

: *

- -

- -

: *

- -

- -

+ - - - (+) -

: *

- - - - - -

: " "

- - - - - -

: *

- - - - - -

**KNOWLEDGE, ATTITUDES AND PRACTICES (KAP) RELATED
TO MEASUREMENT AND EVALUATION FOR PHYSICAL
EDUCATORS OF NORTHERN REGION OF JORDAN.**

By

Wasfi Al-Khazaleh,

supervisors

Dr. Huasain Abu-Al-Ruz , Prof.

Abstract

The purpose of this study was to identify Knowledge, Attitudes, and Practices (KAP) related to evaluation and measurement at northern region physical educators. This region include: Irbed governate, Ajloun governate, Jeresh governate and Al-Mafraq govrenate. Another purpose was to identify difference in study subject respondents according to sex, qualification educational experience, governate, graduation university for the teacher.

The researcher used descriptive methodology “Surveys”. The study sample was selected using relative categorization to ensure the representation of all geographic regions within the study sample. The study sample included teachers male, female.

To achieve the study purpose, the researcher designed and built an instrument consisting of the following axes:

- Knowledge: included multiple choice.
- Attitudes: included statements related to attituded towards measurement and evaluation “ ” point Likert Scale”.
- Practices: included statements related to specific practices of measurement and evaluation” point Likert Scale”.

Study instrument total validity was , while total reliability was , using split half method. SPSS was used to analyze study subject a responses. Statistical procedures included: means, SDs, percentages, correlation coefficients, t-test, one way ANOVA followed by Chiffet test to identify differences.

The study revealed the following:

- Knowledge axe concerned with physical education teachers evolution and measurement was moderate “ ”, where attitudes dimension was high “means , , while practices dimension was low “means, , ”.
- There was statistically significant difference in knowledge dimension attributed to sex, in favor of female teachers, while there was no differences in attitudes and practices dimensions attributed to the small variable.
- There was statistically significant differences on all study dimensions “knowledge, attitudes, practices” attributed to qualification, in favor of higher education degrees.
- No statistically significant differences on study dimensions, attributed to experience.
- No statistical significant differences knowledge dimension attributed to governate, while there was statistically significant difference attributed to attitudes, in favor of Al Mafraq governate, and in practices dimension, in favor of Jerash governate.

There was statistically significant differences on all study dimensions, attributed to graduation university, in favor of Jordanian university and Yarmouk University.